



**Retreat. Rest. Restore.**



**“When someone enters Holy Land Farms, our prayer is that the atmosphere for them changes. Our mission is to share the love of God and offer a place of retreat where one can find rest in the Father.”**

1 Corinthians 2:9





## THE STORY

# “In my Father’s house there are many mansions. Let’s buy it in HIS name.”

Roger Womack



After attending a men’s retreat (with some hesitation, he admits), the Lord touched Jason Womack’s heart in ways he never expected or intended. This farmer, businessman, devoted husband, father and son was called to serve. In no time, the Lord guided Jason to launch “The Road Less Traveled” Ministries, which has grown over nearly two decades. Meanwhile, as Jason’s life continued to unfold with his beautiful

wife, three children and a successful sod farm developed with his dad, God’s nudge to do something else could no longer be denied. A new property came available for purchase. Jason and his dad were mesmerized by its beauty.

Visions of hosting retreats, Christian music and worship events were so powerful that Jason asked his dad to come see, feel, and listen for himself. The father-and-son team set out to listen to God as they walked the property and talked about a vision from the Lord. Roger Womack sat quietly as his son shared what the Lord had shown him. The following morning Jason received a text from his dad: “In my Father’s house there are many mansions. Let’s buy it in HIS name.”



Roger and Jason were on track to complete the anointed project together. Sadly, Jason's father passed away suddenly just two months later. A few weeks after Roger's passing, Jason's mom became very ill. Wrought with grief and worry, he initially thought the Holy Land Farms project was not meant to be. But God insisted and Jason listened.

After pondering the sale of the property, the Lord guided Jason to keep it. On a visit with a dear friend, the Lord took them to a very holy part of the new farm...one lone flower sited the location of the chapel. The text from Roger months prior to his passing, solidified the look, feel, and location of the retreat center. Jason can still hear his dad's voice declaring "All I want to do is put a large cross on this farm, because it is only by Him that you and I are here."

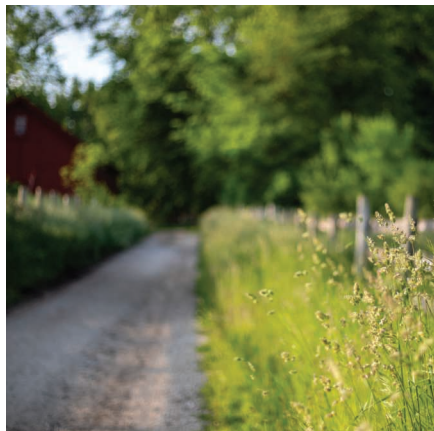
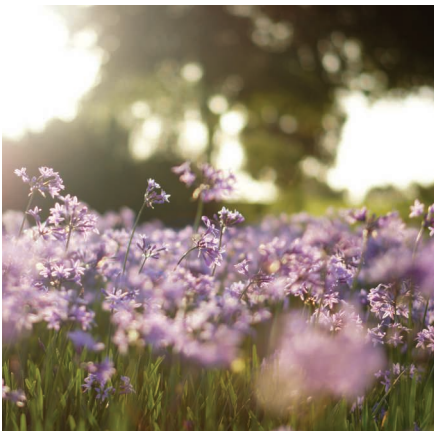


## “For the Lord your God is bringing you into a good land.”

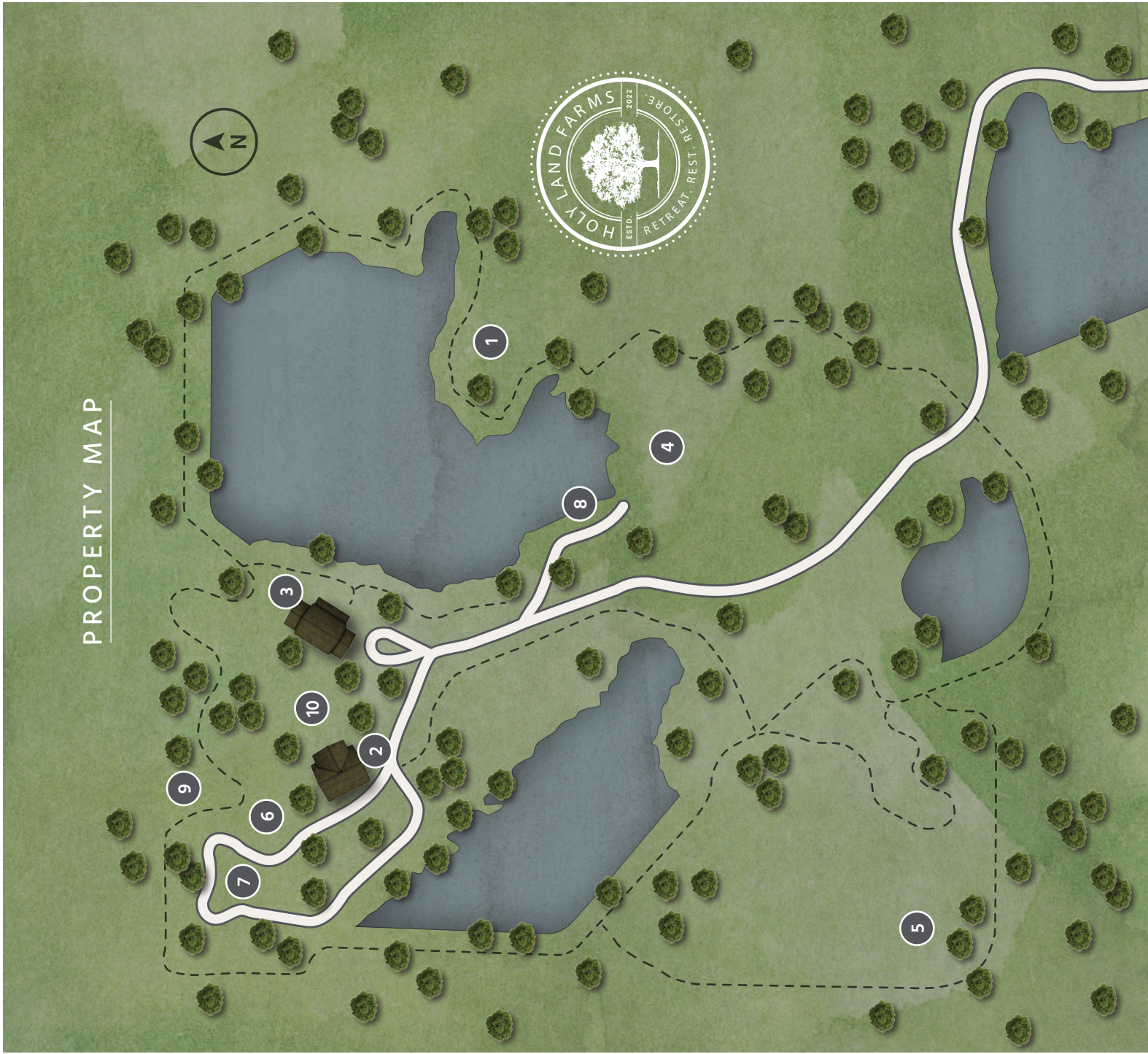
Deuteronomy 8:7-10

The gentle landscape of Holy Land Farms is located in South Georgia, about 12 miles east of Tifton. Live oak and red oak trees surround the pastures and dot the land for pockets of southern shade. Dense areas of trees provide a sanctuary for wildlife. The subtle valleys and rolling hills span over 300 acres of peace and quiet...inviting even the weariest to exhale and rest.

The land itself explains how it should be. Four lakes, walking and biking trails, cattle grazing, fields of wildflowers for honey and sites for a retreat center, a chapel, yurts and RVs. The amphitheater will sit on a peninsula at the southern tip of the largest lake.



# PROPERTY MAP



1 The Lord's Cross

2 HLF Chapel

3 HLF Retreat Center

4 HLF Amphitheater

5 Honey Fields

6 Yurts

7 RV Spaces

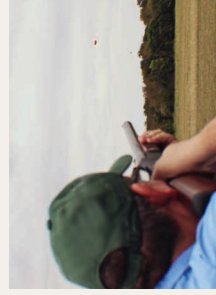
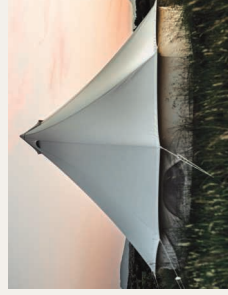
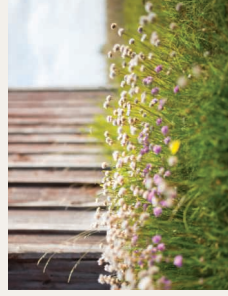
8 Boat Ramp

9 Pop's Skeet Range

10 Firepit

--- Walking & Biking Trail

— Road





## THE RETREAT CENTER

# “Come to Me. Get away with me and you’ll recover your life.”

Matthew 11:28-30



invites visitors to experience spiritual retreat – and maybe even a glass of sweet tea and honey. Designed to hold up to 200 people, the HLF Retreat Center encourages conversation with several small fire pits, dual fireplaces on the porch and areas for small break-out discussions.

As the guest enters Holy Land Farms, the winding drive slows the breath and calms the mind. Around one lake and through the wildflowers, with the vision of the Lord’s cross in the distance – the hopeful traveler comes upon the HLF Retreat Center. The rustic yet contemporary building with wood, stacked stone and metal finishes sits at the highest point on the farm, overlooking the lake. A deep porch

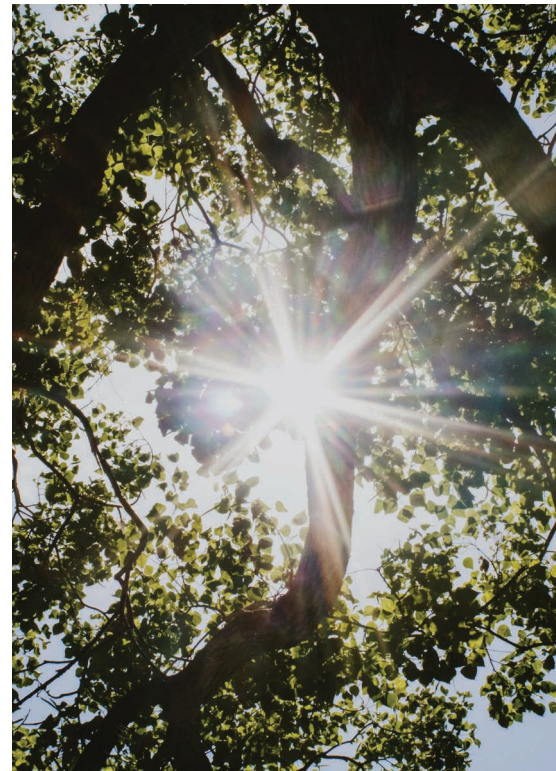
The spacious interior of the HLF Retreat Center is warm and welcoming. Large or small groups have the opportunity to use the kitchen, audio-visual equipment, discussion tables and comfortable seating for quiet one-on-one discussions. A medical station is also planned for the center, as all pathways lead to this central hub of Holy Land Farms.

## “For where two or three gather in my name, there am I with them.”


Matthew 18:20

As Jason walked the land with a dear and trusted friend, they came upon one lone flower. The site was perfect for the HLF Chapel. Again, the land itself, with the Lord’s whisper, told them exactly what to do. And so the replica of an 1800’s style chapel will sit at that very spot. The HLF Chapel will have an open-air feel, with one center aisle between the pews. Eyebolts with oil lanterns tied off on the sides will

help provide an ambiance of peace and simplicity...something this world desperately needs. The HLF Chapel will be positioned facing south so the beautiful stained-glass cross can cast flecks of sunlight throughout the day. Southern live oak trees sit between the HLF Chapel and the HLF Retreat Center with a walking path between the two buildings. The HLF Chapel will be open for those who want to pray at any time.







**“Sing and make music from  
your heart to the Lord.”**

Ephesians 5:19

## THE AMPHITHEATRE

Godstock 2025 is already in the works. Marked as the inaugural event for Holy Land Farms, the HLF Amphitheatre is set to host a series of Christian concerts for people from all walks of life. Spiritual journeys and discoveries are very personal, and the Lord’s music moves through the soul to help facilitate that very personal growth. No matter where one is on the walk of faith, an intimate setting of musical fellowship lifts the spirit and brings joy to the Holy Land Farms visitor. Events at the HLF Amphitheatre are sure to bring life, laughter, and fellowship to all attendees.



Surrounded by water on three sides, the HLF Amphitheater stage faces a comfortable hillside for concert goers to sing, dance, relax and pray. The back of the bandstand shelter has open slats to allow glimpses of the 24 acre lake behind the stage. As with all venues at Holy Land Farms, walkways and trails to the HLF Retreat Center, the HLF Chapel and restrooms are planned.

## “Clear the way for the Lord in the wilderness...”

Isaiah 40:3-5

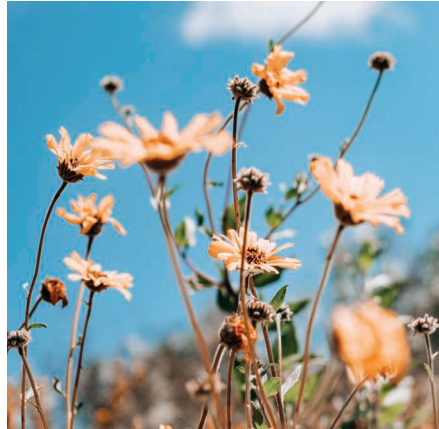


Imagine a mission group waking up on a beautiful morning in one of 10 well-appointed yurts. A soft mist covers the path to a common area bathhouse. Each yurt houses 5 bunks with a wood burning stove at the center. Opportunities for prayer and quiet reflection abound at Holy Land Farms, and a slow walk along the pathways to the HLF Retreat Center or the Chapel offer moments of waking up to the Lord and preparation for a day of ministry or simple healing.

For some, a retreat includes an RV, and Holy Land Farms is set to accommodate these travelers. Just west of the yurt camp are several RV spaces with public restrooms.

And for those who enjoy being outside in nature with a little adventure, Pop's Skeet Range is on the northernmost part of the property. The skeet range honors Jason's father, and offers a different kind of fun and fellowship for various men's and women's groups.





## “Gracious words are a honeycomb, sweet to the soul and healing to the bones.”

Proverbs 16:24

“Honey in the Rock.” That was the answer to the question Jason posed to his good friend while sitting by the pond. “What is your favorite worship song?” They played Honey in the Rock over and over that day. Out of this conversation came another directive from the Lord and the land. Honey will be used to glorify the Lord. The honey fields and wildflower pastures are positioned on the southwest part of the property. Cattle graze on the far east side of the farm. Holy Land Honey is set to be a gift from the land,

symbolizing the land of milk and honey and all the good and abundance that comes from our Lord.

The carefully planned walking trails and pathways throughout Holy Land Farms stretch over two miles, connecting the HLF Retreat Center, Chapel, Amphitheater, honey fields, ponds and more. But mostly, these trails connect the visitor to God. With prayer benches placed along the way, there is an invitation to pause. Sit. Exhale. Pray.

**Be still and know that I am.**

## “In the same way, let your light shine before people, so they can see the good things you do and praise your Father who is in heaven.”

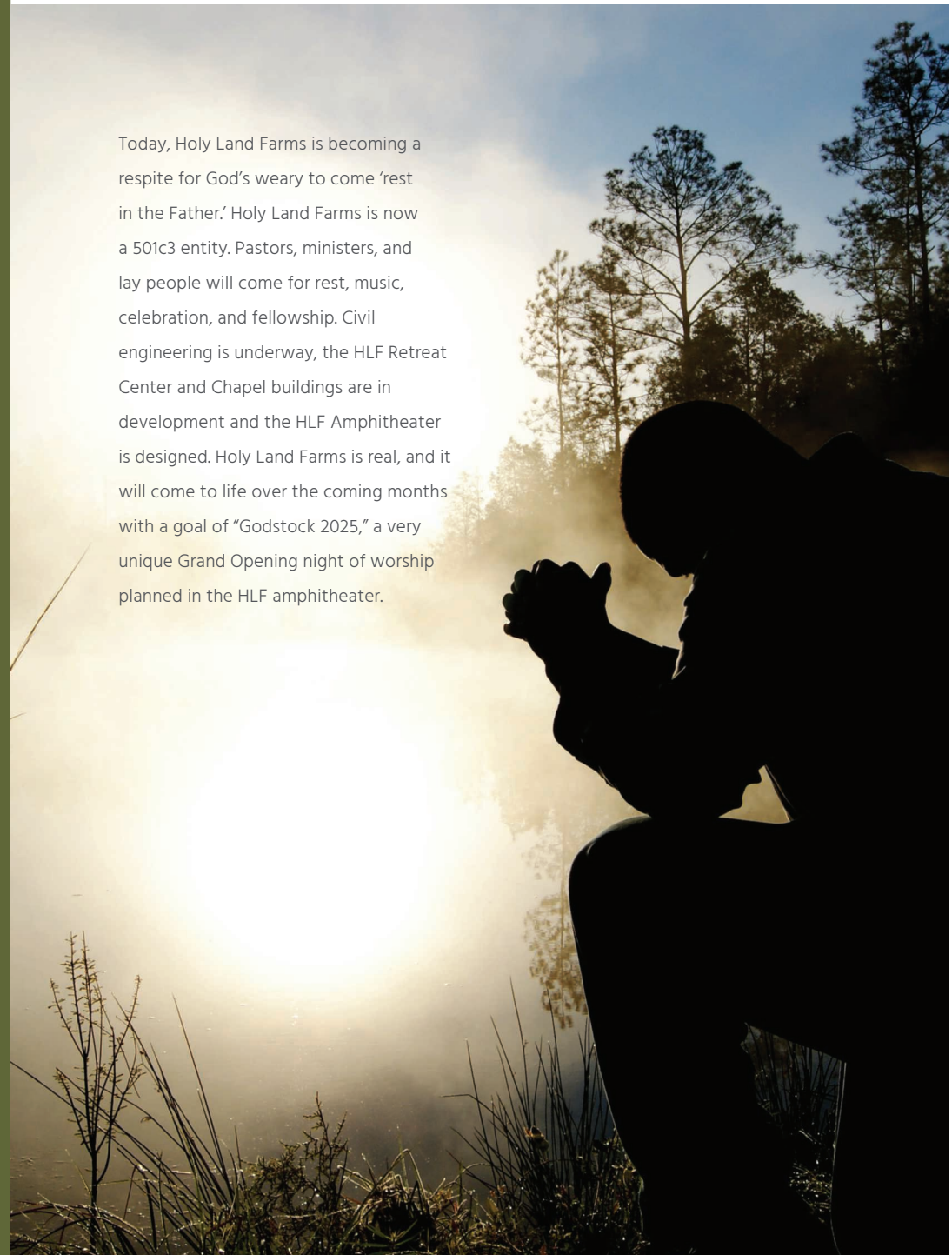
Matthew 5:16

Sometimes, helping others is as simple as praying to the Lord and asking what He would have you do. Please prayerfully consider how you might share in the vision of Holy Land Farms.



How will the Lord work through you? We are so grateful to you and appreciate the time you have taken to learn about Holy Land Farms. We welcome your involvement with time talent and treasure. Join us in trusting that the Lord will provide as we all live thoughtfully and honorably through our words and actions. Thank you and we love you.

Today, Holy Land Farms is becoming a respite for God's weary to come 'rest in the Father.' Holy Land Farms is now a 501c3 entity. Pastors, ministers, and lay people will come for rest, music, celebration, and fellowship. Civil engineering is underway, the HLF Retreat Center and Chapel buildings are in development and the HLF Amphitheater is designed. Holy Land Farms is real, and it will come to life over the coming months with a goal of "Godstock 2025," a very unique Grand Opening night of worship planned in the HLF amphitheater.





170 ADAMS ROAD | CHULA, GA 31733 | 229.256.4956

[HOLYLANDFARMS.ORG](http://HOLYLANDFARMS.ORG)